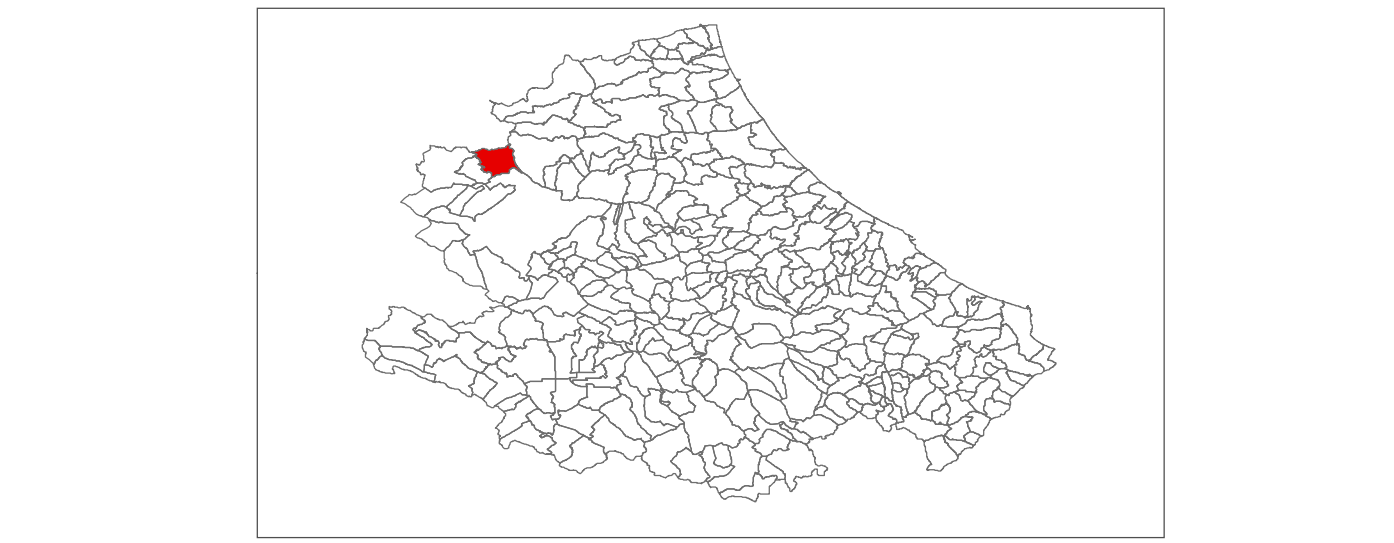


MICROZONAZIONE SISMICA

Carta delle Microzone Omogenee in Prospettiva Sismica

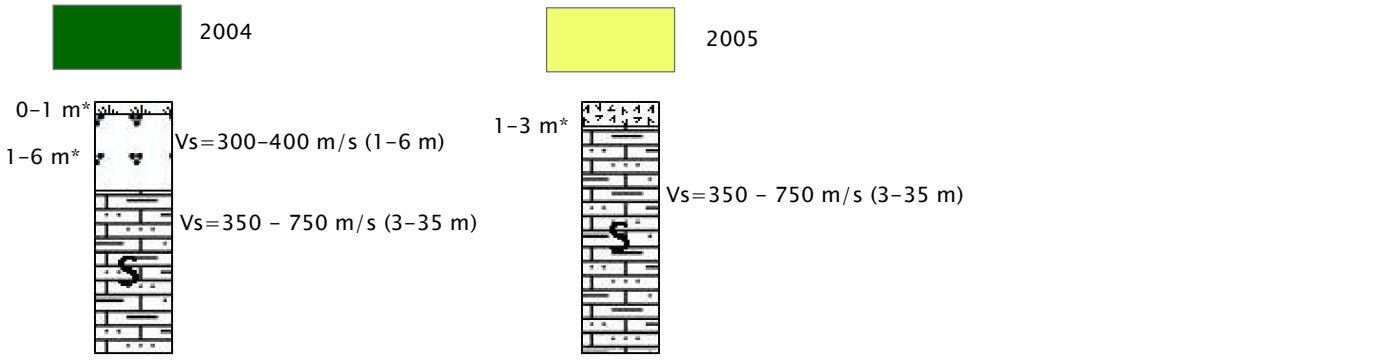
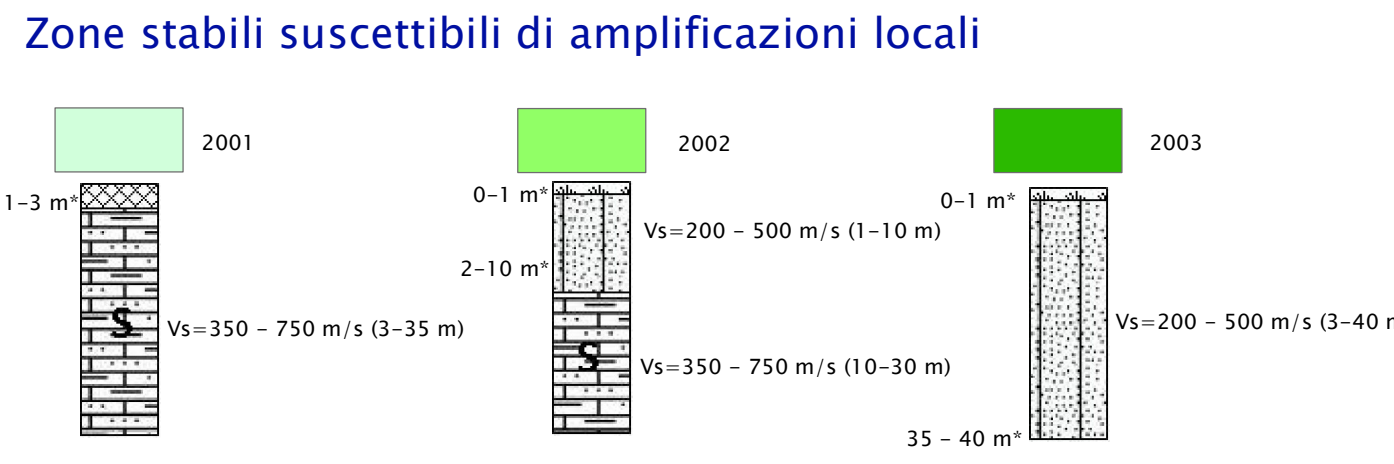
scala 1:5.000

REGIONE ABRUZZO
Comune di Campotosto (AQ)



Regione	Soggetto realizzatore Dott. Geol. Katia D'Onofrio	Data
	Collaboratore: Dott. ANA MARIA JUJUETA GRIGORESCU	Ottobre 2012

Legenda



* Spessori valutati dal solo rilevamento geologico e da indagini progressive, quindi soggetti ad incertezza

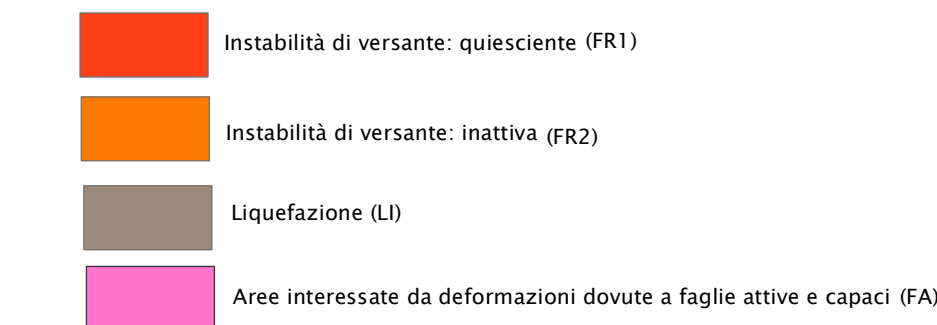
Informazioni sul substrato geologico non rigido

Alternanza di litotipi	S Substrato non rigido, stratificato
------------------------	--------------------------------------

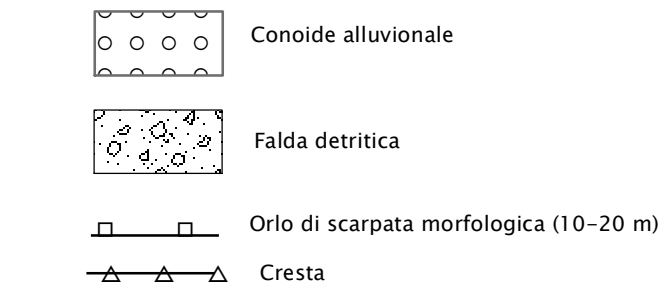
Litologia dei terreni di copertura

Materiale di riporto	Terreno vegetale	Sabbie limose, miscela di sabbia e limo (SM)
sabbie ghiaiose (SW)	Detrito di versante a granulometria mista (ZZ)	

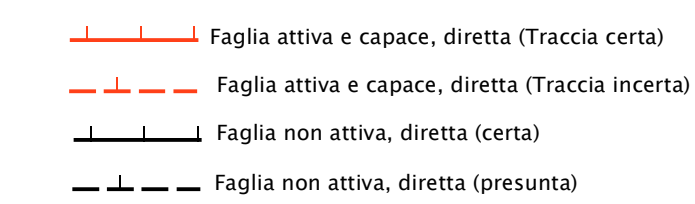
Zone suscettibili di instabilità



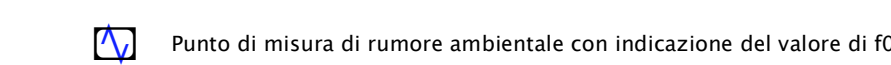
Forme di superficie e sepolte



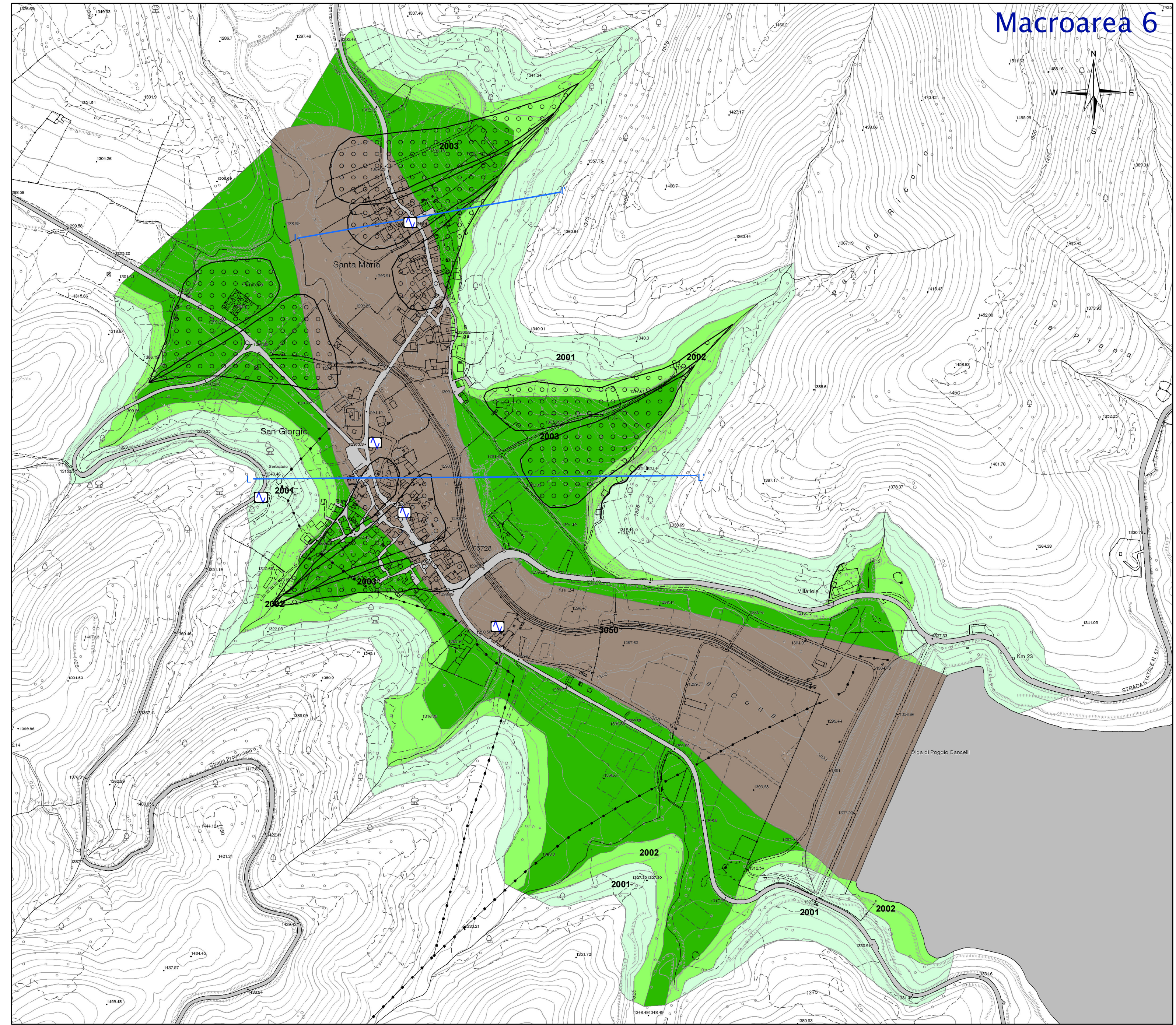
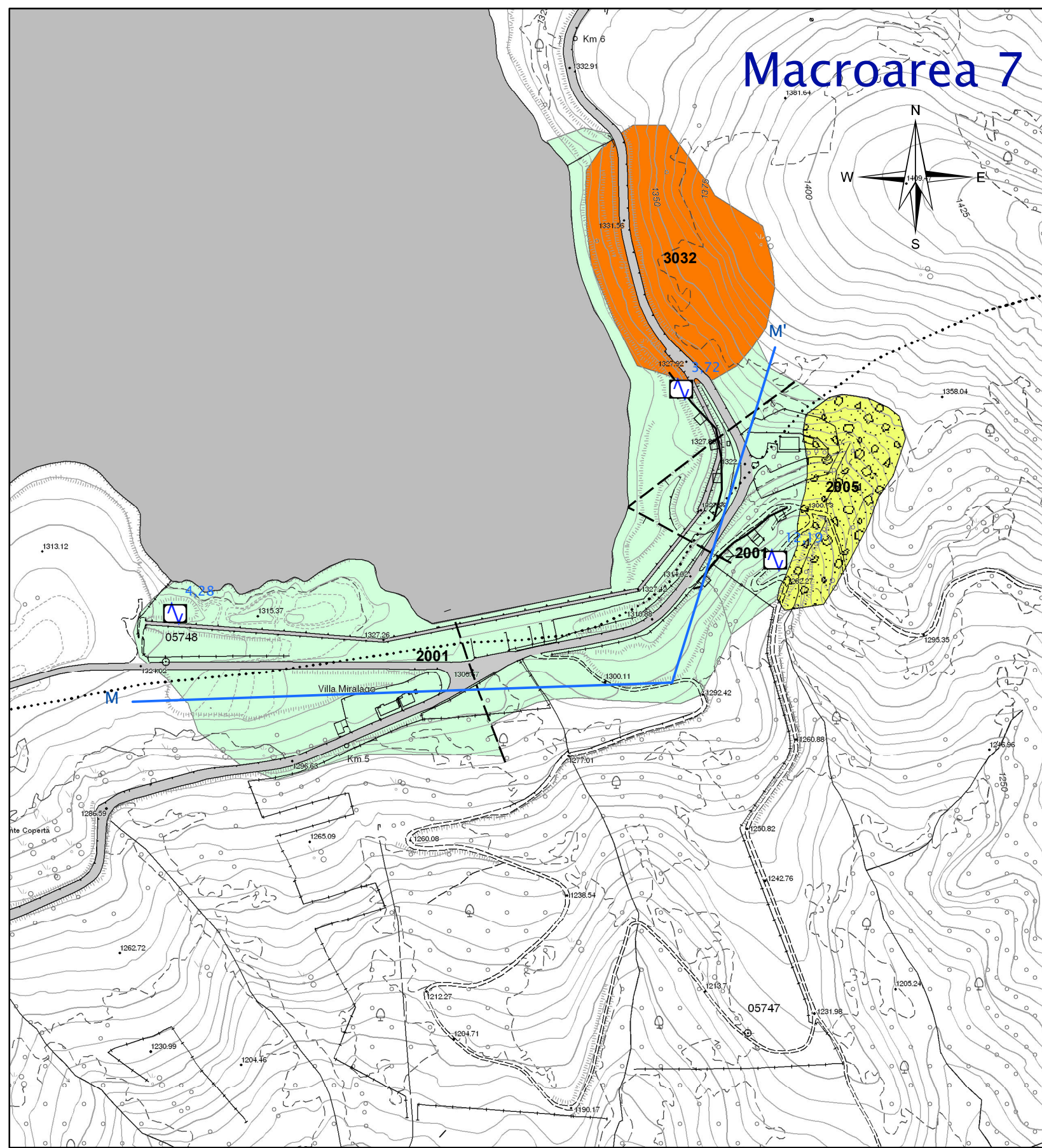
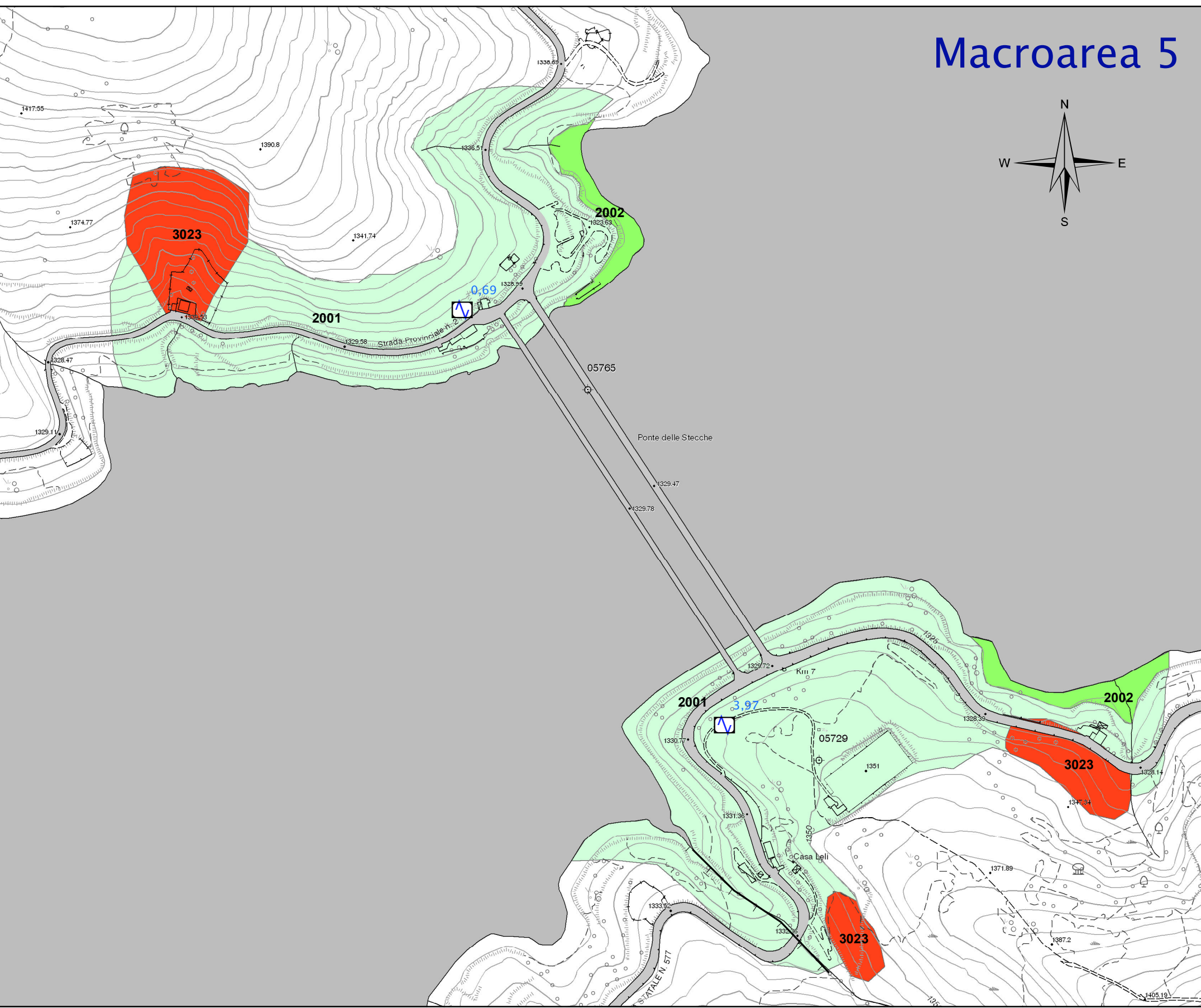
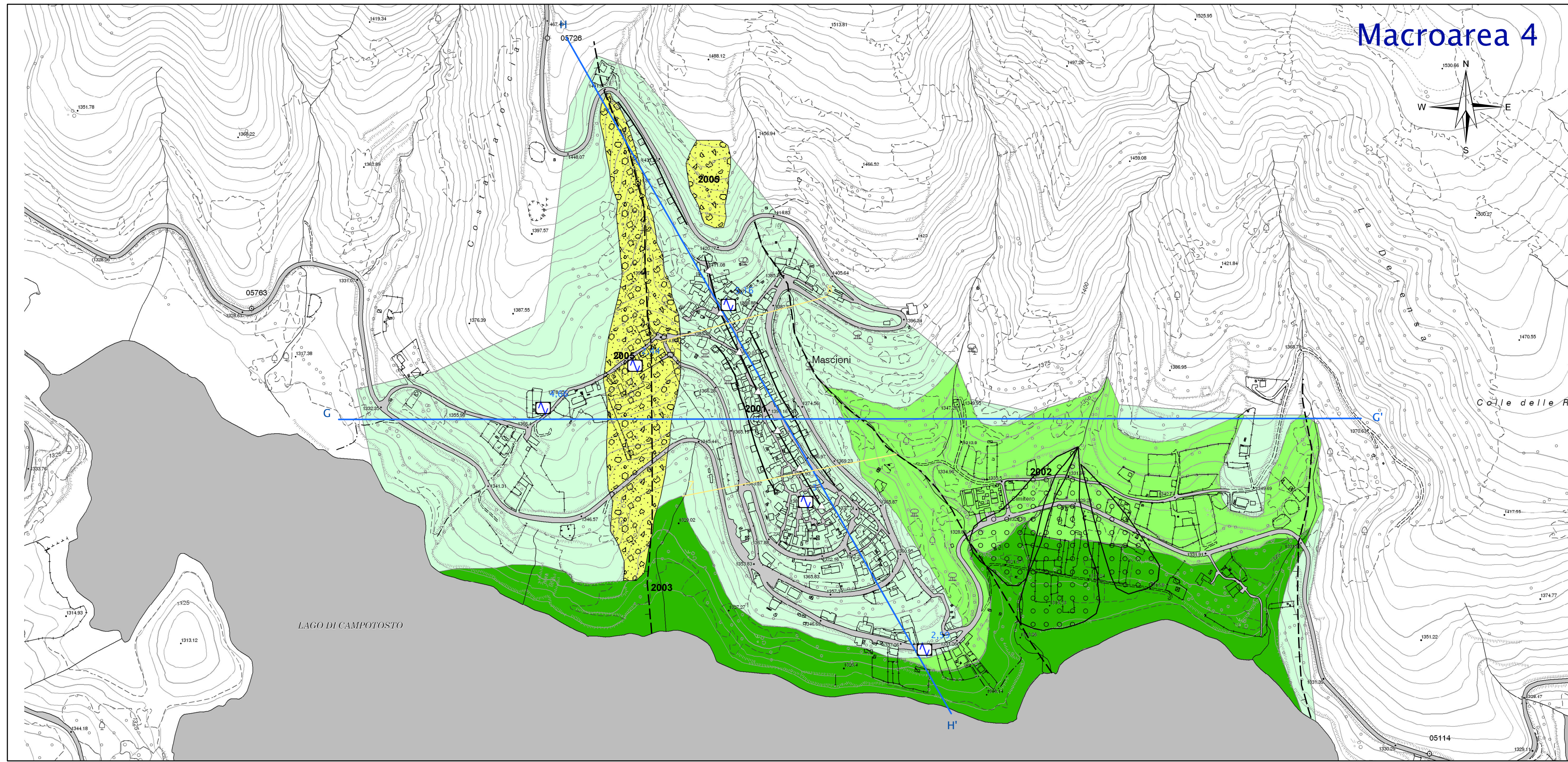
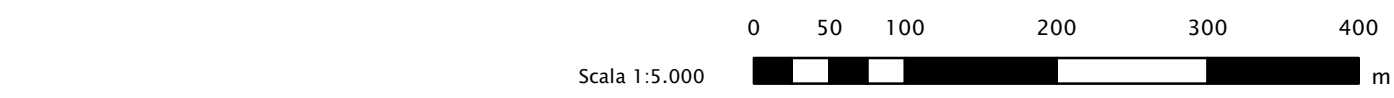
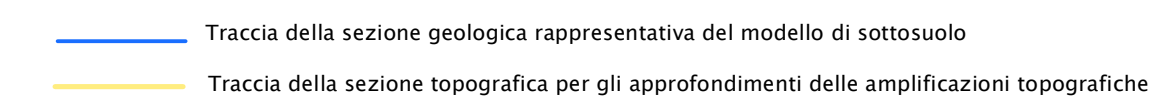
Elementi struttrali



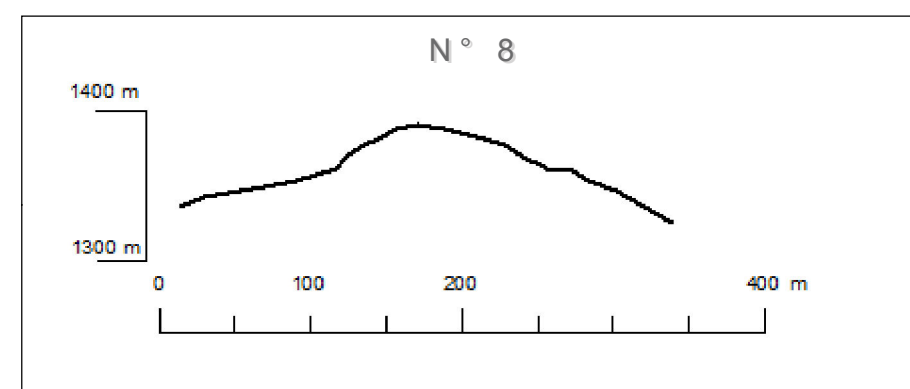
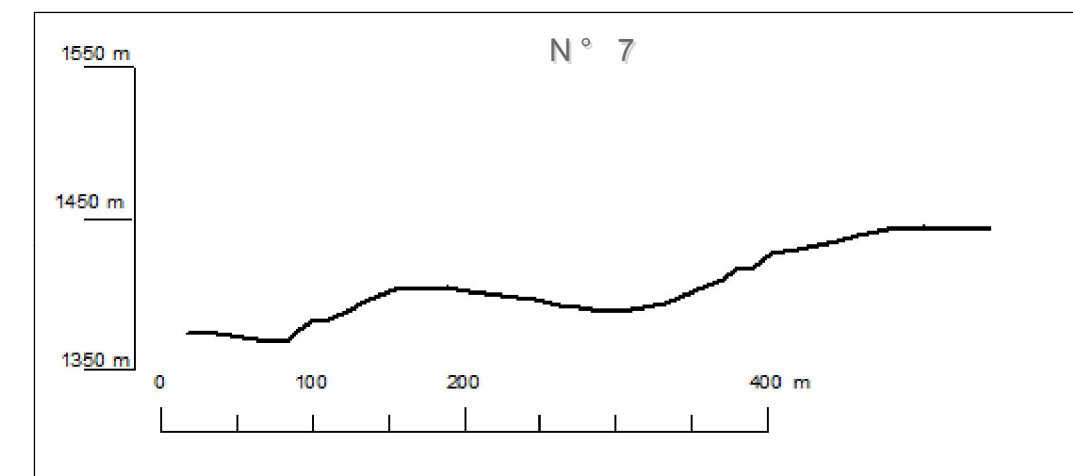
Punti di misura di rumore ambientale



Altri elementi lineari



Sezioni topografiche



Sezioni Geologiche - Tecniche

